

Product overview

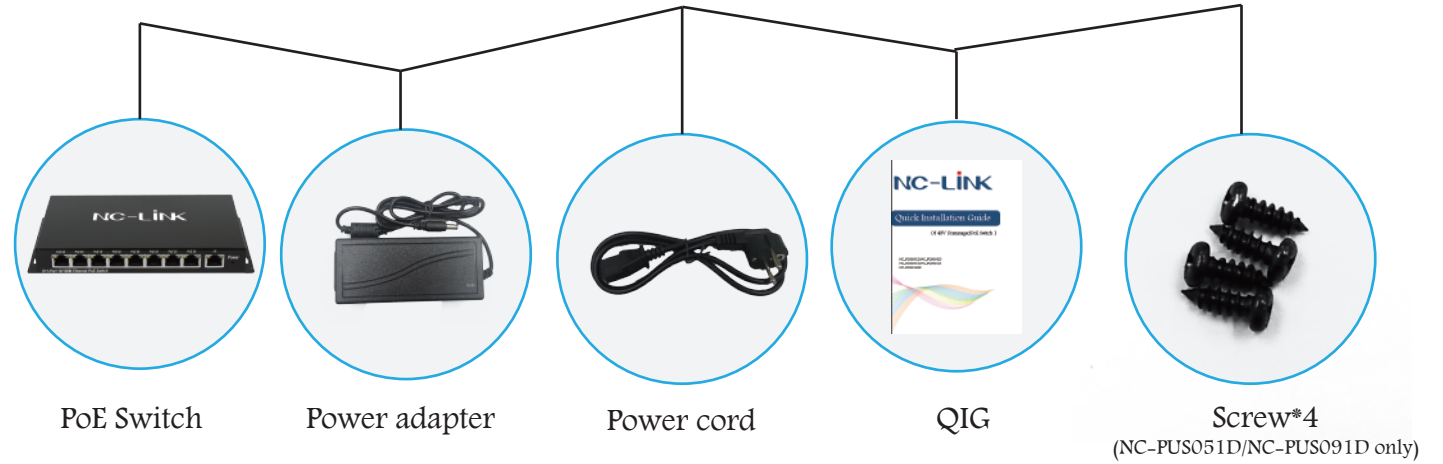
This PoE series switch are all standard PoE Switches, complied with 802.3af and at. It includes fast Ethernet and gigabit, 5/8/9/10 ports. NC-PUS051D/NC-PUS091D also can be hung against the wall with the hanging hole design which is more convenient to match with network deployment and surveillance set up.

Quick Installation Guide

Of 48V Unmanaged PoE Switch I

NC-PUS051D/NC-PUS091D
NC-PUS051G/NC-PUS081G
NC-PUS010GF

Package contents



Interface

NC-PUS051D



NC-PUS091D



NC-PUS051G



NC-PUS081G



NC-PUS010GF



LED indicators

Power	ON: The switch is powered on
	OFF: The switch is power off or the power is abnormal
Link/ACT	ON: A device is linked to the port but no activity
	Flashing: The port is transmitting or receiving data OFF: There is no linking to the port
PoE	ON: A PoE PD device connect to the port successfully
	Flashing: The PoE power circuit may be in short or the power current may be overloaded
	OFF: There is no Power Device connected to the port

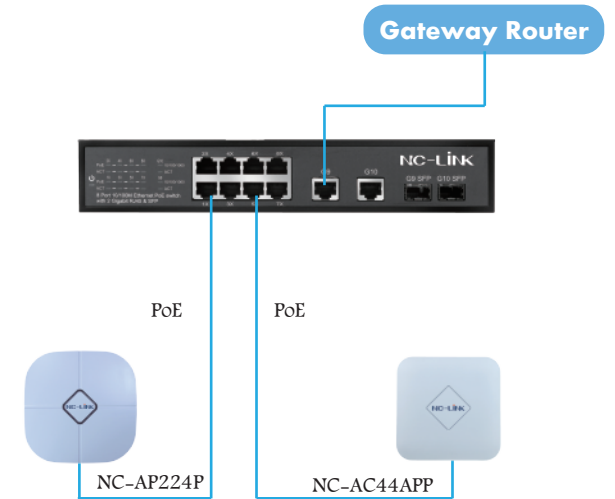
Installation

For hanging against wall:



- Put the device against the wall.
- Turn the screw clockwise and fasten to the wall.

Topology



NC-LINK TECHNOLOGY LIMITED



Website: www.nc-link.cn
Support E-mail: info@nc-link.cn